

2014 Supplemental Annual Report



THE ROAD COMMISSION FOR IONIA COUNTY



Riverside Dr. Bridge over Libhart Creek

**170 E. RIVERSIDE DRIVE
PO BOX 76
IONIA, MI 48846**

www.ioniacountyroads.org

ROAD COMMISSION FOR IONIA COUNTY

170 EAST RIVERSIDE DRIVE

IONIA, MICHIGAN

2014

SUPPLEMENTAL ANNUAL REPORT

WILLIAM E. WEISGERBER, CHAIRMAN

KENNETH L. GASPER, VICE-CHAIRMAN

ALBERT A. ALMY, MEMBER

HERBERT C. CUSACK, MEMBER

CHARLES G. MINKLEY, MEMBER

DOROTHY G. POHL, MANAGING DIRECTOR

PAUL A. SPITZLEY, COUNTY HIGHWAY ENGINEER

ROAD COMMISSION FOR IONIA COUNTY

170 E. Riverside Drive • P.O. Box 76 • Ionia, Michigan 48846 • Phone (616) 527-1700 • Fax (616) 527-8848

CHARLES G. MINKLEY
Commissioner

WILLIAM E. WEISGERBER
Commissioner

KENNETH L. GASPER
Commissioner

ALBERT A. ALMY
Commissioner

KAREN D. BOTA
Commissioner

DOROTHY G. POHL, CPA
Managing Director

PAUL A. SPITZLEY, P.E.
County Highway Engineer

April 8, 2015

The Honorable Board of County Commissioners
County of Ionia, Michigan
County Courthouse
Ionia, Michigan 48846

Dear Commissioners:

We are pleased to present for your review our Supplemental Annual Report for 2014. The formal accounting report required by law will be submitted to the Michigan Department of Transportation and the Ionia County Clerk by May 1, 2015. We have begun meeting with many of our townships this month and will continue throughout the year. This report will be presented and distributed to each township official at the Ionia County Township Officer's Association meeting on April 13, 2015.

As in the past, we will continue to search for the most efficient and effective methods to accomplish our work and give the taxpayers the "best bang for their buck". We will continue to evaluate both services and service levels to optimize maintenance after our record-breaking winter this past season.

We sincerely appreciate the help and support that the County Board and all the Township Boards in Ionia County have given us over the past year. We look forward to our continued good working relationship to provide the highest possible level of safety and service on Ionia County roads and bridges.

Respectfully submitted on behalf of the Board of County Road Commissioners for Ionia County,



Dorothy G. Pohl
Managing Director/Clerk of the Board
Ionia County Road Commission

TABLE OF CONTENTS
Road Commission for Ionia County
2014 Annual Report

Introduction	1 - 2
2014 Revenue and Expenditure Charts	3
History of Major Revenues	4
2014 Financial Summary with Comparative Data	5
2014 Primary Routine Maintenance Expenditures by Township	6
2014 Local Routine Maintenance Expenditures by Township.....	7
2014 Primary and Local Maintenance by Type.....	8
Primary and Local Projects by Township	9 - 12
Schedule of Capital Outlay.....	13
Status of Road Mileage by Township.....	14
2014 Right of Way Permits Issued	15
Organization Chart	16

INTRODUCTION

Road Commission for Ionia County

2014 Annual Report

“With pride, the Road Commission for Ionia County strives to provide the highest quality roads and bridges to public and commercial users in the most effective manner possible.”

This statement encompasses the mission of the Road Commission. This Annual Report documents our 2014 projects and financial activities and is designed to show how we strive to meet our goals.

The Road Commission for Ionia County was established in 1919 by a vote of the citizens of Ionia County and charged by law with the duty “to keep in reasonable repair, so that they shall be reasonably safe and convenient for public travel, all county roads, bridges and culverts that are under their care and control, and which are open to public travel”. State laws also require the Road Commission to permit and regulate certain activities in the road right of way, to enforce state restrictions on vehicle size and weight, and to set reasonable standards for adopting new roads into the county system.

Over the past 95 years, the Ionia County road system has grown to include 389 miles that are now designated as County Primary roads. Passage of the McNitt Act in 1931 abolished the old township road system and transferred all miles of township roads to the Road Commission during the 1930’s. These old township roads, together with new roads built since then make up what is now the 684 mile system of County Local roads. Overall, 35% or 378 miles of all Ionia County roads are paved, with the remaining 696 miles being either gravel surfaced or unimproved.

The Michigan Transportation Fund (MTF) is the depository of fuel taxes and vehicle registration fees collected by the state and is the principal source of road commission funding. The collected funds are distributed by a complicated, yet transparent and verifiable formula to the Michigan Department of Transportation (MDOT), 535 cities and villages, and the 83 county road agencies. High fuel prices have stifled growth in fuel tax collections over the past several years. While our total MTF revenues for 2014 were up slightly (3%), the state budget forecast for 2015 remains relatively flat.

The Road Commission works very hard to take advantage of any available special funds, such as Michigan Economic Development Funds (Category A & D) and Federal funds (STP) to shore up revenues. We have worked closely with the Michigan Department of Transportation on development of Safety programs under the Federal program MAP-21 and have submitted several project applications for future project funding under the Local Safety Program. We finished up 3 prior year Safety improvements during 2014. We have two approved Safety Program projects for 2015. We also applied for and were awarded Michigan Economic Development Fund (TED-A) funds for improvements to 2.5 miles of Jordan Lake Road as a result of a business expansion at Cargill Kitchen Solutions.

Over the past 21 years, over \$16.2 million dollars have been invested to replace county bridges. This work was possible through funding provided by the Federal Highway Administration, State of Michigan Local Bridge Program, and our townships. We replaced three bridges during 2014 –

Long Lake over Flat River in Otisco Township; Keefer Highway over Sebewa Creek in Danby/Sebewa Townships; and Riverside Drive over Libhart Creek in Ionia Township. None of these projects would have been possible without substantial support from our township partners.

We were able to replace the remaining closed bridges that were destroyed in the April 2013 floods during 2014. New structures are now in place on Ellison Road in Easton Township and 4 Mile Road in Otisco Township. We applied for and received funding from the Local Bridge Program for a new replica covered bridge to replace our historical Whites Covered Bridge in Keene Township that was completely destroyed by an arson fire. Volunteers are actively soliciting donations for the local share of the project.

While we did not have a formal Local Road Matching Program in 2014, we continued to cover most internal charges for work performed by road commission forces on township selected projects. The total cost of that limited program was \$160,925, or an average of \$10,058 per township. Financial assistance from our townships contributed a record \$1.9 million dollars for improvements and additional maintenance on the local road system. Without this township assistance, most local roads would see very little improvement. This partnership helps provide better service to our joint constituencies and promote a higher quality of life.

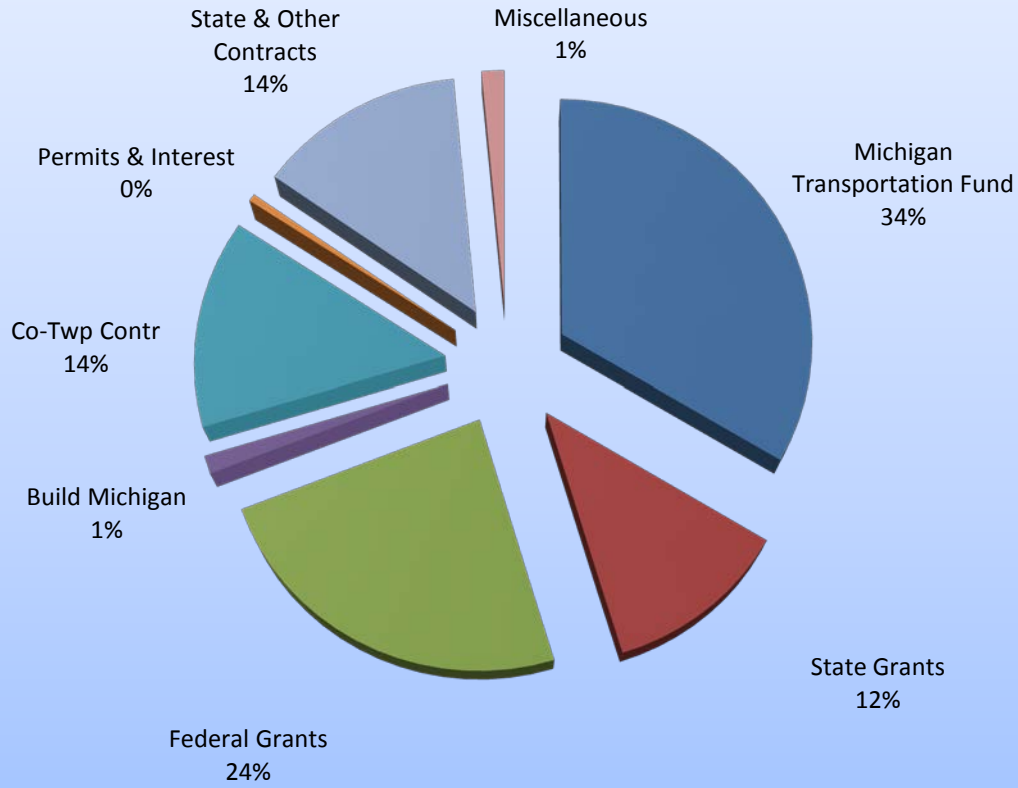
Multiple challenges lay ahead for 2015 and the future. We will continue to face needs far in excess of available revenues. We continue to see increases in insurance, fuel, steel, and equipment. We have cut, trimmed, eliminated, chopped and deferred in order to continue to provide services to our residents. We are running out of ways to do our job without additional revenues. There is no real growth projected for the MTF for the future.

It's been 17 years since the gas tax was last increased. Bills have been introduced in the legislature to increase transportation revenues, but none have been signed into law. We narrowly lost an August 2014 countywide millage vote to provide 2 mills to fund needed repairs to our Primary paved roads. We definitely need to seriously examine both the short and long term outlook for transportation financing in this state and the country.

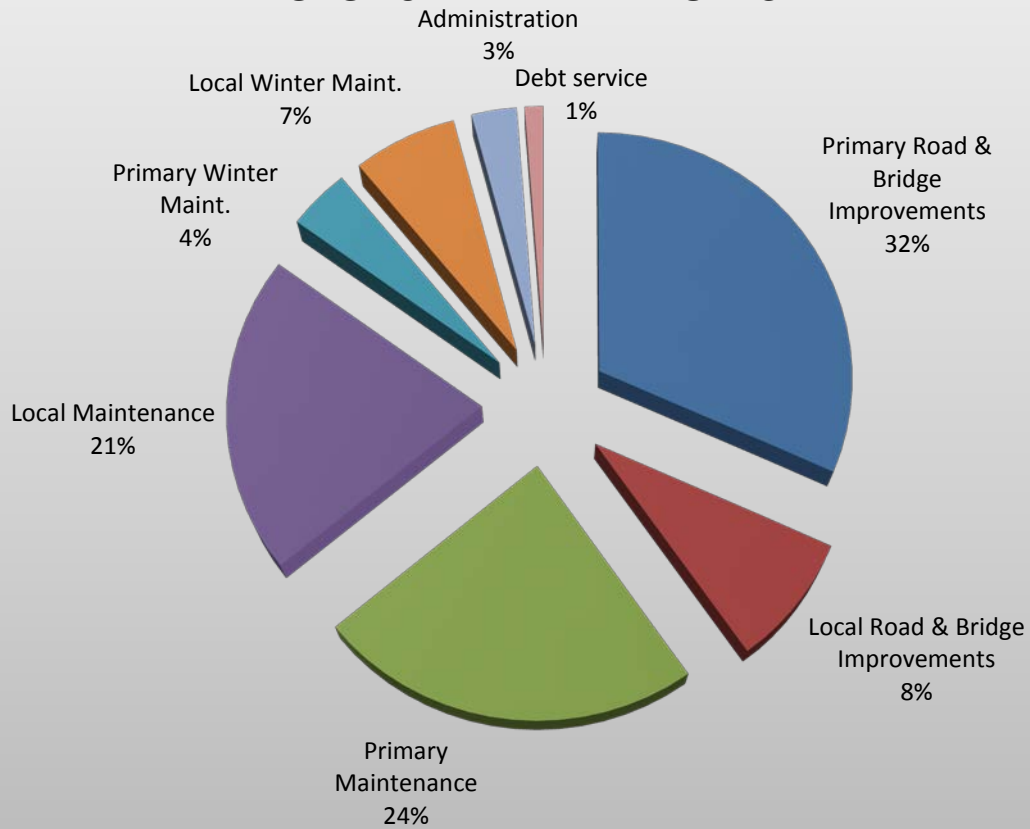
In December, the state Legislature passed a series of bills that impact transportation funding and called for a statewide election on May 5, 2015. Proposal One is a statewide ballot initiative to increase the sales tax by one penny from 6% to 7%. Passage would cause the 6% sales tax currently collected on fuel to end and the fuel tax to transition to a percentage based wholesale tax constitutionally restricted to transportation purposes. The 1% increase in the sales tax would be used to fund the schools, cities, and villages who would lose sales tax funding. Proposal One would pump over \$1.3 million in 2016, \$2.6 million in 2017 and \$3.9 million in 2018 and beyond for Ionia County roads and bridges.

Our Road Commission employees are a vital element of our equation. We appreciate their hard work and dedication. Even though the ranks have shrunk over the past 10 years, they continue to work even harder to provide a reasonable service level to you and other county residents. As this report shows, the Road Commission for Ionia County and its employees, your local road professionals, are faithfully working to fulfill the commission's mandate to provide safe and convenient roads.

ICRC 2014 REVENUES



ICRC 2014 EXPENDITURES



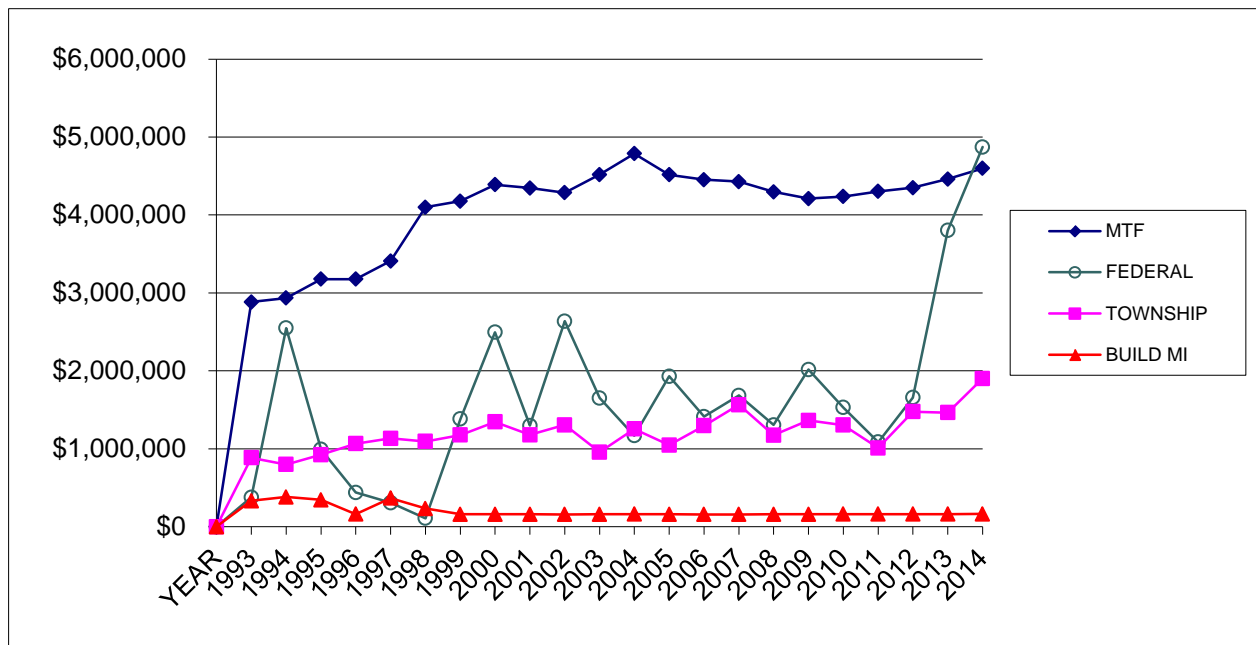
IONIA COUNTY ROAD COMMISSION

History of MTF Revenue

Township Contributions and Federal/State Aid

YEAR	MTF COUNTY SHARE	BUILD MI MTF	FEDERAL STATE	TOWNSHIP CONTRIBUTIONS	TWP CONTR AS % OF MTF
1993	\$ 2,882,221	\$ 332,096	\$ 376,692	\$ 885,347	31%
1994	\$ 2,934,506	\$ 381,404	\$ 2,549,175	\$ 799,181	27%
1995	\$ 3,176,208	\$ 344,807	\$ 992,197	\$ 923,776	29%
1996	\$ 3,177,189	\$ 161,132	\$ 438,938	\$ 1,065,355	34%
1997	\$ 3,408,285	\$ 366,411	\$ 306,604	\$ 1,133,399	33%
1998	\$ 4,098,990	\$ 234,473	\$ 108,494	\$ 1,094,049	27%
1999	\$ 4,177,338	\$ 160,238	\$ 1,382,346	\$ 1,175,931	28%
2000	\$ 4,388,604	\$ 159,875	\$ 2,495,881	\$ 1,344,917	31%
2001	\$ 4,345,328	\$ 159,261	\$ 1,298,266	\$ 1,177,470	27%
2002	\$ 4,286,062	\$ 158,213	\$ 2,636,751	\$ 1,305,601	30%
2003	\$ 4,518,602	\$ 159,082	\$ 1,649,975	\$ 955,860	21%
2004	\$ 4,786,647	\$ 161,212	\$ 1,167,282	\$ 1,253,636	26%
2005	\$ 4,515,197	\$ 159,113	\$ 1,929,262	\$ 1,046,112	23%
2006	\$ 4,453,393	\$ 157,915	\$ 1,413,450	\$ 1,295,117	29%
2007	\$ 4,427,614	\$ 157,846	\$ 1,684,459	\$ 1,564,583	35%
2008	\$ 4,296,173	\$ 159,041	\$ 1,306,380	\$ 1,174,721	27%
2009	\$ 4,209,680	\$ 160,364	\$ 2,016,716	\$ 1,363,984	32%
2010	\$ 4,235,886	\$ 161,075	\$ 1,530,104	\$ 1,304,006	31%
2011	\$ 4,301,927	\$ 161,420	\$ 1,085,778	\$ 1,010,200	23%
2012	\$ 4,349,562	\$ 161,552	\$ 1,656,083	\$ 1,475,562	34%
2013	\$ 4,460,278	\$ 161,971	\$ 3,801,355	\$ 1,464,523	33%
2014	\$ 4,597,456	\$ 163,510	\$ 4,871,257	\$ 1,900,752	41%

ICRC - REVENUE BREAKDOWN



IONIA COUNTY ROAD COMMISSION
2014 FINANCIAL SUMMARY
WITH COMPARISON DATA

	2011	2012	2013	2014	PRELIMINARY
REVENUES	ACTUAL	ACTUAL	ACTUAL	ACTUAL	2015 BUDGET
Beginning Fund Balance	\$1,340,755	\$1,644,654	\$1,850,587	\$1,679,103	\$1,680,695
Permit Revenues	\$60,639	\$52,715	\$55,080	\$67,691	\$63,762
Federal Funds	\$1,036,664	\$1,628,786	\$1,090,447	\$3,261,834	\$2,309,152
Michigan Transportation Funds	\$4,463,347	\$4,511,114	\$4,622,249	\$4,760,966	\$4,622,249
State Critical Bridge Funds	\$46,850	\$0	\$2,368,827	\$515,411	\$85,575
State Economic Development Funds	\$2,264	\$27,297	\$342,081	\$1,094,012	\$330,420
County Board Appropriation	\$4,950	\$275,172	\$35,000	\$0	\$0
City, Private, Other Contributions	\$31,701	\$268,159	\$168,672	\$188,632	\$20,000
Township Contributions	\$1,010,200	\$1,475,562	\$1,464,523	\$1,900,752	\$1,304,911
State Trunkline Contract	\$1,027,375	\$1,305,150	\$1,384,449	\$1,804,067	\$1,214,462
Interest Income	\$6,568	\$3,966	\$2,866	\$1,422	\$2,000
Equipment Rental Credits	\$1,618,488	\$1,544,972	\$1,866,885	\$2,218,884	\$1,750,000
Lease Proceeds	\$0	\$95,200	\$135,000	\$226,000	\$254,000
Transfer in/Adjustments	\$0	\$0	\$0	\$0	\$0
Miscellaneous Income	\$65,024	\$94,280	\$7,088	\$104,985	\$40,000
TOTAL REVENUES	\$10,714,825	\$12,927,027	\$15,393,754	\$17,823,759	\$13,677,226
EXPENDITURES					
Primary Heavy Maintenance-Road	\$1,213,962	\$2,279,424	\$2,350,759	\$932,818	\$1,580,000
Primary Heavy Maintenance-Bridge	\$366,657	\$109,296	\$2,702,305	\$2,808,674	\$650,500
Primary Routine Maintenance	\$1,037,489	\$1,262,181	\$1,172,228	\$961,467	\$1,023,355
Primary Preventive Maintenance	\$56,451	\$339,821	\$85,222	\$1,795,111	\$541,546
Primary Winter Maintenance	\$379,841	\$242,323	\$451,603	\$481,883	\$425,000
Local Heavy Maintenance-Road	\$619,518	\$1,082,914	\$674,772	\$1,009,289	\$1,083,531
Local Heavy Maintenance-Bridge	\$0	\$0	\$24,444	\$0	\$0
Local Routine Maintenance	\$1,457,550	\$1,558,755	\$1,703,713	\$1,506,801	\$1,482,233
Local Preventive Maintenance	\$487,492	\$609,601	\$618,352	\$906,676	\$586,785
Local Winter Maintenance	\$372,164	\$179,112	\$398,189	\$804,377	\$450,000
State Trunkline Maintenance	\$1,027,375	\$1,224,820	\$1,267,387	\$1,728,585	\$1,214,462
Equipment Expense	\$1,523,470	\$1,340,265	\$1,481,650	\$2,042,878	\$1,701,158
Equipment Depreciation	\$379,951	\$349,661	\$374,026	\$288,747	\$350,719
Administrative Expense	\$329,821	\$327,469	\$305,993	\$303,982	\$346,067
Engineering Expense	\$33,794	\$36,334	\$64,070	\$43,840	\$35,339
Maintenance-Other Units	\$32,891	\$21,040	\$40,416	\$86,816	\$30,000
Capital Outlay	\$139,801	\$337,181	\$324,589	\$396,730	\$796,919
Debt Service	\$125,913	\$125,902	\$48,958	\$142,672	\$48,409
Ending Fund Balance	\$1,510,636	\$1,850,589	\$1,679,104	\$1,967,061	\$1,681,922
EXPENDITURES	\$11,094,776	\$13,276,688	\$15,767,780	\$18,208,407	\$14,027,945
LESS: EQUIPMENT DEPRECIATION	(\$379,951)	(\$349,661)	(\$374,026)	(\$384,648)	(\$350,719)
TOTAL EXPENDITURES	\$10,714,825	\$12,927,027	\$15,393,754	\$17,823,759	\$13,677,226

IONIA COUNTY ROAD COMMISSION
2014 PRIMARY ROAD AND BRIDGE ROUTINE/WINTER MAINTENANCE
Summary by Township

TOWNSHIP	COST	MILES	PER MILE
BERLIN	\$96,169	29.39	\$3,272.17
BOSTON	\$126,794	30.33	\$4,180.48
CAMPBELL	\$72,074	19.08	\$3,777.46
DANBY	\$92,330	23.46	\$3,935.64
EASTON	\$94,725	26.43	\$3,584.00
IONIA	\$106,760	23.33	\$4,576.08
KEENE	\$74,754	28.39	\$2,633.11
LYONS	\$75,862	18.70	\$4,056.79
NORTH PLAINS	\$132,219	26.49	\$4,991.28
ODESSA	\$41,944	19.82	\$2,116.25
ORANGE	\$135,373	31.33	\$4,320.87
ORLEANS	\$68,811	20.19	\$3,408.17
OTISCO	\$72,328	20.76	\$3,484.01
PORTLAND	\$71,456	19.51	\$3,662.53
RONALD	\$111,440	31.36	\$3,553.57
SEBEWA	\$70,313	21.13	\$3,327.64

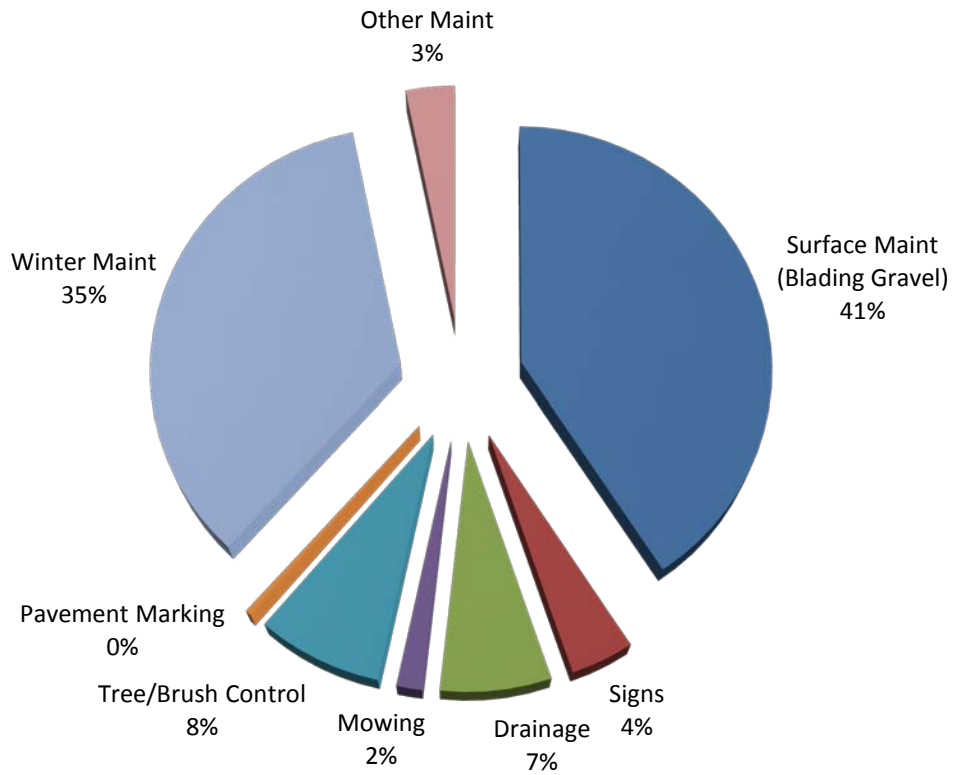
TOTAL 2014
 PRIMARY ROUTINE/WINTER
 MAINTENANCE \$1,443,352 389.70 \$3,703.75

IONIA COUNTY ROAD COMMISSION
2014 LOCAL ROAD AND BRIDGE ROUTINE/WINTER MAINTENANCE
Summary by Township

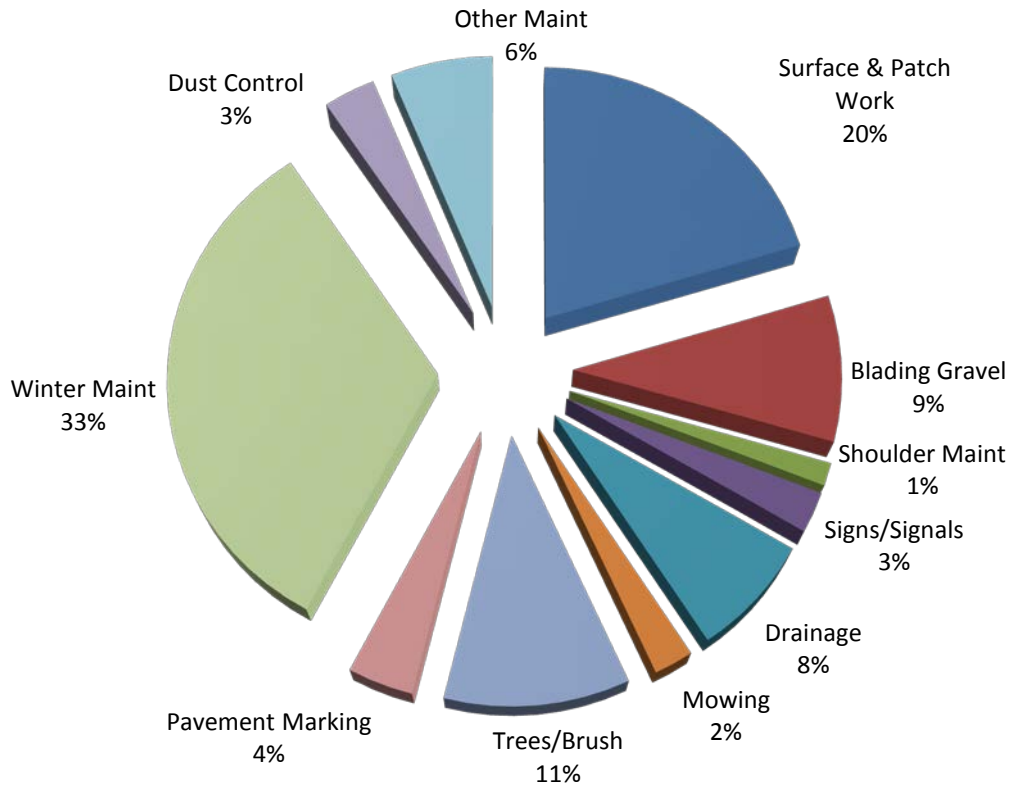
TOWNSHIP	ICRC COST	MILES	AVERAGE PER MILE
BERLIN	\$117,176	42.96	\$2,727.56
BOSTON	\$181,825	36.42	\$4,992.45
CAMPBELL	\$130,187	43.56	\$2,988.68
DANBY	\$169,896	46.19	\$3,678.20
EASTON	\$102,795	35.79	\$2,872.17
IONIA	\$156,598	42.30	\$3,702.08
KEENE	\$167,008	40.28	\$4,146.18
LYONS	\$173,113	45.19	\$3,830.78
NORTH PLAINS	\$158,087	42.47	\$3,722.32
ODESSA	\$187,371	55.52	\$3,374.84
ORANGE	\$78,712	25.95	\$3,033.22
ORLEANS	\$148,358	47.47	\$3,125.30
OTISCO	\$143,293	46.81	\$3,061.16
PORTLAND	\$137,276	42.94	\$3,196.93
RONALD	\$111,524	36.24	\$3,077.37
SEBEWA	\$147,959	51.41	\$2,878.02

TOTAL 2014
 LOCAL ROUTINE/WINTER
 MAINTENANCE \$2,311,178 681.50 \$3,391.31

2014 LOCAL ROAD MAINTENANCE BY TYPE



2014 PRIMARY ROAD MAINTENANCE BY TYPE



IONIA COUNTY ROAD COMMISSION

2014 Primary Road and Bridge Projects

Listed by Township

TOWNSHIP	DESCRIPTION	2014 TOTAL COST	FEDERAL/ STATE FUNDS	TOWNSHIP FUNDS
DANBY	Bridge Replacement-Keefer PE/Design-Grand River Safety	\$ 272,721 \$ 11,258	\$ 229,813	\$ 21,454
EASTON	Ellison Road Culvert Crack/Chip/Fog Seal Bellamy, Potters Graff, and Dildine	\$ 99,754 \$ 219,171		\$ 219,171
IONIA	Bridge Replacement-Riverside Bridge Replacement-Cleveland Intersection-Cleveland/Kelsey PE/Design-Keefer Safety	\$ 956,083 \$ 124,062 \$ 46,267 \$ 5,921	\$ 842,206 \$ 111,023 \$ 41,869	\$ 113,880 \$ 3,260
LYONS	PE/Design-Keefer Safety	\$ 5,921		
ODESSA	HMA Resurface-Jordan Lake	\$ 650,264	\$ 405,233	
ORANGE	PE/Design-David Bridge	\$ 156		
OTISCO	Safety proj-Resurf-Whitesbridge Safety proj-Button Bridge Replacement-Long Lake	\$ 17,897 \$ 50,828 \$ 1,182,931	\$ 9,034 \$ 40,306 \$ 1,057,032	\$ 62,950
PORTLAND	PE/Design-Divine Hwy	\$ 28,649		
SEBEWA	Bridge Replacement-Keefer	\$ 272,721	\$ 229,813	\$ 21,454
MISC	Engineering-future projects Close out old projects Countywide Chip & FogSeal Prev Maint Riverside, Nash, Keefer, W. Main, Yeomans, Tuttle, Hubbardston, Kelsey, Grand River, Long Lake , Clarksville	\$ 13,284 \$ 2,776 \$ 1,748,063	\$ 1,211,818	
	Total	\$ 5,708,727	\$ 4,178,147	\$ 442,169

IONIA COUNTY ROAD COMMISSION

2014 Local Road and Bridge Projects

Listed by Township

TOWNSHIP	DESCRIPTION	PROJECT COST	TOWNSHIP CONTRIBUTION
BERLIN	Drainage and Culvert Replacements	\$ 732	
	Dust Control Applications	\$ 18,842	\$ 18,842
	Crack/Chip/Fog Seal Peck Lk & Harwood	\$ 96,138	\$ 86,805
	Total	\$ 115,712	\$ 105,647
BOSTON	Drainage and Culvert Replacements	\$ 7,589	\$ 487
	Dust Control Applications	\$ 26,951	\$ 26,951
	7000 cyds Gravel Resurfacing	\$ 73,489	\$ 59,700
	Prel Engr - Darby, MacArthur	\$ 1,993	\$ 1,803
Total	\$ 110,022	\$ 88,941	
CAMPBELL	Drainage and Culvert Replacements	\$ 2,662	\$ 802
	Dust Control Applications	\$ 31,204	\$ 31,204
	6000 cyds Gravel Resurfacing	\$ 66,045	\$ 55,564
	Culvert Replacement-Elm Rd	\$ 28,300	\$ 18,926
Total	\$ 128,211	\$ 106,496	
DANBY	Drainage and Culvert Replacements	\$ 2,573	\$ 276
	Dust Control Applications	\$ 27,209	\$ 27,209
	8300 cyds Gravel Resurfacing	\$ 71,034	\$ 62,978
	Brush cut - Frost/Towner	\$ 7,038	\$ 3,131
	Brush cut - Grand River Trail	\$ 12,051	\$ 5,796
Total	\$ 119,905	\$ 99,390	
EASTON	Drainage and Culvert Replacements	\$ 732	
	Dust Control Applications	\$ 22,594	\$ 22,594
	3745 cyds Gravel Resurfacing	\$ 27,097	\$ 24,627
	Brush cut - Sayles	\$ 18,416	\$ 10,468
	Chip/Fog Seal Parmeter, Sayles	\$ 93,789	\$ 92,402
Total	\$ 162,628	\$ 150,091	

IONIA COUNTY ROAD COMMISSION
2014 Local Road and Bridge Projects
Listed by Township

TOWNSHIP	DESCRIPTION	PROJECT COST	TOWNSHIP CONTRIBUTION
IONIA	Drainage and Culvert Replacements	\$ 5,399	\$ 152
	Dust Control Applications	\$ 19,478	\$ 19,478
	Chip/Fog Seal-various	\$ 115,408	\$ 114,631
	3955 cyds Gravel Resurfacing	\$ 36,400	\$ 32,247
	Engineering-E Main/Stage Safety	\$ 37,334	
	Total	\$ 214,019	\$ 166,508
KEENE	Drainage and Culvert Replacements	\$ 6,448	\$ 706
	Dust Control Applications	\$ 10,892	\$ 10,892
	5605 cyds Gravel Resurfacing	\$ 48,954	\$ 46,995
	Total	\$ 66,294	\$ 58,593
LYONS	Drainage and Culvert Replacements	\$ 6,539	\$ 750
	Dust Control Applications	\$ 22,055	\$ 22,055
	4500 cyds Gravel Resurfacing	\$ 33,098	\$ 29,108
	Culvert Replacement-Spaulding	\$ 5,996	\$ 2,301
	Culvert Replacement-Stone Rd	\$ 6,915	\$ 2,640
	Cut Brush-Stone Rd	\$ 2,756	\$ 1,206
	Crack Seal, Arrowhead Dr	\$ 2,223	\$ 2,223
	Total	\$ 79,582	\$ 60,283
NORTH PLAINS	Drainage and Culvert Replacements	\$ 4,653	\$ 1,149
	Dust Control Applications	\$ 15,701	\$ 15,701
	Chip/Fog Seal O'Brien Rd	\$ 34,463	\$ 34,463
	Total	\$ 54,817	\$ 51,313
ODESSA	Drainage and Culvert Replacements	\$ 5,397	\$ 1,083
	Dust Control Applications	\$ 22,711	\$ 22,711
	3760 cyds Gravel Resurfacing	\$ 40,868	\$ 33,497
	Culvert Replacement	\$ 16,839	\$ 11,434
	Crack Seal Arden, Carlon, Lakept, Wilbrk	\$ 7,722	\$ 7,722
	Total	\$ 93,537	\$76,447

IONIA COUNTY ROAD COMMISSION

2014 Local Road and Bridge Projects

Listed by Township

TOWNSHIP	DESCRIPTION	PROJECT COST	TOWNSHIP CONTRIBUTION
ORANGE	Drainage and Culvert Replacements	\$ 3,782	\$ 844
	Dust Control Applications	\$ 10,269	\$ 10,269
	2351 cyds Gravel Resurfacing	\$ 20,367	\$ 18,854
	Total	\$ 34,418	\$ 29,967
ORLEANS	Drainage and Culvert Replacements	\$ 2,089	\$ 1,002
	Dust Control Applications	\$ 24,387	\$ 24,387
	4130 cyds Gravel Resurfacing	\$ 34,054	\$ 31,472
	Replace Bridge Deck-Canfield	\$ 32,953	\$ 15,566
Total	\$ 93,483	\$ 72,427	
OTISCO	Drainage and Culvert Replacements	\$ 3,951	\$ 387
	Dust Control Applications	\$ 32,171	\$ 32,171
	6090 cyds Gravel Resurfacing	\$ 67,817	\$ 56,409
	Bridge Replacement-4 Mile Rd	\$ 42,712	\$ 18,112
	Chip/Fog Seal Palmer Rd	\$ 71,303	\$ 70,360
Total	\$ 217,954	\$ 177,439	
PORTLAND	Drainage and Culvert Replacements	\$ 6,418	\$ 215
	Dust Control Applications	\$ 22,492	\$ 22,492
	7070 cyds Gravel Resurfacing	\$ 67,278	\$ 60,613
	Subgrade stabilize-Goodwin	\$ 119,885	\$ 91,908
	Culv Repl-Maple & Goodwin fence	\$ 9,619	\$ 5,874
	Chip/Fog Seal Lyons, Maynard	\$ 31,323	\$ 31,323
Total	\$ 257,015	\$ 212,425	
RONALD	Drainage and Culvert Replacements	\$ 6,815	
	Dust Control Applications	\$ 27,785	\$ 27,785
	2200 cyds Gravel Resurfacing	\$ 18,358	\$ 17,007
Total	\$ 52,958	\$ 44,792	
SEBEWA	Drainage and Culvert Replacements	\$ 4,580	\$ 398
	Dust Control Applications	\$ 23,774	\$ 23,774
	8240 cyds Gravel Resurfacing	\$ 82,516	\$ 67,471
	Culvert Replacement-Goddard	\$ 4,542	\$ 1,807
Total	\$ 115,412	\$ 93,450	

IONIA COUNTY ROAD COMMISSION

2014 CAPITAL OUTLAY

Equipment Purchases

Road Equipment:

2014 Chevrolet Impala	\$17,466
2014 Ford F350 crew cab pickup	\$23,343
2014 Ford F250 ext. cab pickups (2)	\$47,286
Gradall	\$283,000
Radios	\$3,193
Chainsaws/pole pruners	\$2,403
Pressure washer	\$3,350
Trash pump	\$224
Distance measuring devices (2)	\$1,858
Tailgate sander	\$5,371
Salvage Pickup #105	\$1,055

Shop Equipment:

Mechanic's tablets/keyboards	\$2,825
------------------------------	---------

Buildings:

Air conditioning unit	\$2,676
Furnace	\$2,680

TOTAL 2014 CAPITAL OUTLAY EXPENSE	\$396,730
-----------------------------------	-----------

IONIA COUNTY ROAD COMMISSION

STATUS OF ROAD MILEAGE

July 1, 2014

Township	Primary Roads		Local Roads		Hard Surface Total	Gravel Surface Total	Total Miles in Twp.	% Hard Surface to Total
	Hard Surface	Gravel Surface	Hard Surface	Gravel Surface				
BERLIN	29.39	0.00	12.94	30.02	42.33	30.02	72.35	58.51%
BOSTON	25.50	4.83	2.28	33.99	27.78	38.82	66.60	41.71%
CAMPBELL	13.15	5.93	0.05	43.63	13.20	49.56	62.76	21.03%
DANBY	16.52	6.89	1.25	45.49	17.77	52.38	70.15	25.33%
EASTON	26.43	0.00	7.54	28.31	33.97	28.31	62.28	54.54%
IONIA	20.86	2.47	13.44	29.38	34.30	31.85	66.15	51.85%
KEENE	23.92	4.64	0.00	40.28	23.92	44.92	68.84	34.75%
LYONS	15.70	3.00	1.10	44.50	16.80	47.50	64.30	26.13%
NORTH PLAINS	18.69	7.80	1.97	40.50	20.66	48.30	68.96	29.96%
ODESSA	16.82	3.00	0.84	54.84	17.66	57.84	75.50	23.39%
ORANGE	23.26	8.07	0.33	25.49	23.59	33.56	57.15	41.28%
ORLEANS	16.50	3.59	1.55	46.03	18.05	49.62	67.67	26.67%
OTISCO	16.59	3.99	4.66	42.15	21.25	46.14	67.39	31.53%
PORTLAND	17.30	2.21	5.17	38.52	22.47	40.73	63.20	35.55%
RONALD	21.76	9.54	1.09	35.39	22.85	44.93	67.78	33.71%
SEBEWA	21.13	0.00	0.00	51.41	21.13	51.41	72.54	29.13%
TOTAL	323.52	65.96	54.21	629.93	377.73	695.89	1073.62	35.18%

IONIA COUNTY ROAD COMMISSION

RIGHT-OF-WAY PERMITS ISSUED

January 1, 2014 through December 31, 2014

Township	Residential / Farm Drive	Utility	Commercial Drive	Total Permits
Berlin	4	16	0	20
Boston	5	6	0	11
Campbell	9	8	1	18
Danby	7	2	0	9
Easton	3	2	0	5
Ionia	2	14	2	18
Keene	3	3	0	6
Lyons	0	2	0	2
North Plains	4	3	0	7
Odessa	6	5	1	12
Orange	6	1	1	8
Orleans	3	0	0	3
Otisco	2	4	0	6
Portland	10	10	0	20
Ronald	1	1	0	2
Sebewa	1	3	0	4
Annual Utility	0	7	0	7
TOTALS	66	87	5	158

Additional Countywide Permits

Oversize/Overweight Permits

Single 86
Annual 79

Mobile/Modular Home Permits

Single 9
Annual 4

Buildings and Special Loads 1
Seasonal Haul Route Permits 253

MDOT State Trunkline Permits: 0
TOTAL: 432

ROAD COMMISSION FOR IONIA COUNTY
ORGANIZATIONAL CHART

